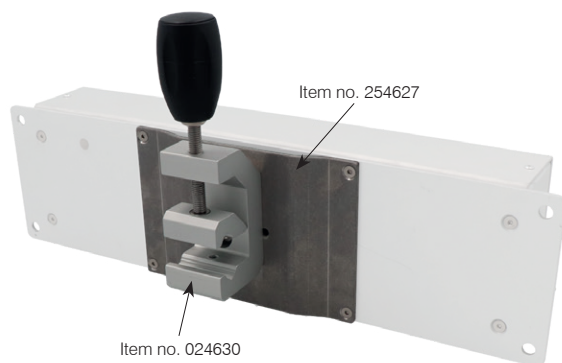




Hospital box according to EN 60601-1



Technical data

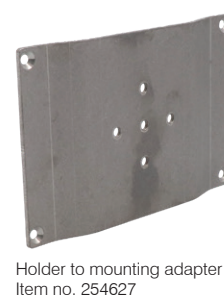
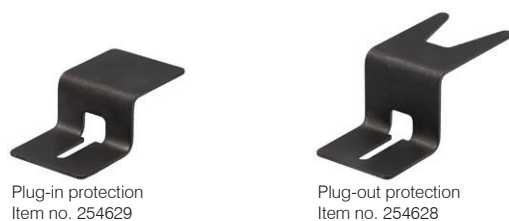
Colour: silver anodised
 Dimensions: Housing exterior 400×110×78 mm (W×H×D),
 mass of holes 380×85×8 mm (W×H×Diam.)

Application

In areas used for medical purposes in group 0, 1 and 2 in accordance to the SN HD 60364-7-710 standard

Product features

- tested according to:
 EN 60601-1 (Medical electrical equipment),
 SN HD 60364-7-710 (Requirements for premises, rooms and installations of a special nature – areas used for medical purposes),
 EN 61439-1 (Low-voltage switchgear and controlgear assemblies)
- Protection class IP20
- IP20 socket with hinged cover
- additional potential equalisation
- plug-in and plug-out protection available
- modular accessories available
- aluminium housing with mounting brackets
- corrosion-resistant
- UV-resistant and halogen-free
- resistant to ageing and temperature
- flame retardant



Available on request:

- IP20 socket without hinged cover
- IP55 socket with hinged cover



Hospital equipment cable
 Item no. 159691, 133036, 133037

| Item no. | Designation |
|----------|---|
| ✓ 254431 | Hospital box aluminium, 4×T13 (IP20 with hinged cover), 5×Pot. equal., PE+zSPA connected |
| 254432 | Hospital box aluminium, 4×T13 (IP20 with hinged cover), 5×Pot. equal., PE+zSPA not connected |

Accessories

| Item no. | Designation |
|----------|--|
| ✓ 159691 | Hospital equipment cable 3×1.5 black L=1.5m T12 |
| ✓ 133036 | Hospital equipment cable 3×1.5 black L=2.5m T12 |
| ✓ 133037 | Hospital equipment cable 3×1.5 black L=4.5m T12 |
| ✓ 254629 | Plug-in protection, IP20 |
| ✓ 254628 | Plug-out protection, IP20 |
| ✓ 024630 | Aluminium mounting adapter for hospital profile |
| ✓ 254627 | Aluminium holder for hospital box for hospital profile item no. 024630 |

Other versions available on request

✓ from stock, offer subject to prior sale

Hospital equipment cord set



Technical data

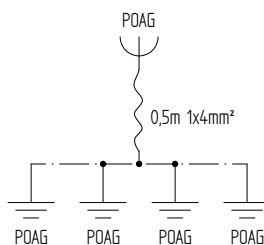
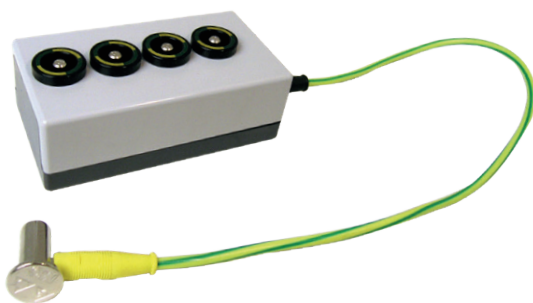
| | |
|----------------------|--|
| Operating voltage: | 450 / 750 V |
| Test voltage: | 2'500 V / 50 Hz |
| Temperature range: | -40° C to +90° C |
| Minimum bend radius: | 10 × D (D = cable diameter) |
| External diameter: | 10.5 mm |
| Strand/casing: | EPR rubber / polyether / PUR, black RAL 9005 |
| T12 plug: | vulcanised onto the cable |
| Equipment plug T113: | vulcanised onto the cable |
| Branch wires: | vulcanised onto the cable |
| MC angle plug: | type POAG-KBT 6 DIN, hand-assembled |

Product features

- tested in accordance with EN 60601-1 (medical electrical equipment)
- vulcanised connectors on both sides (Schuko / T113)
- all-round vulcanised branch lines
- resistant double polyurethane casing (polyether / PUR)
- two functions in one cable
- concentrically fitted potential wire
- no concealed slots / notches
- exceptionally flexible round cable
- maximum flexibility grounding wire 4 mm²
- very short cleaning time
- 100% free of silicone and latex

| Item no. | Designation |
|----------|--|
| ✓ 133036 | GIFAS hospital equipment cord set, black, 2.5m 3×1.5mm ² + 4mm ² , POAG, plug T12, connector T113 |
| ✓ 133037 | GIFAS hospital equipment cord set, black, 4.5m 3×1.5mm ² + 4mm ² , POAG, plug T12, connector T113 |
| ✓ 133038 | GIFAS hospital equipment cord set, black, 2.7m 3×1.5mm ² + 4mm ² , POAG, plug T12, for direct connection |
| ✓ 133039 | GIFAS hospital equipment cord set, black, 4.7m 3×1.5mm ² + 4mm ² , POAG, plug T12, for direct connection |
| ✓ 195544 | GIFAS hospital equipment cord set, black, 4.5m 3×1.5mm ² + 4mm ² , POAG, plug T23, connector C19 |
| ✓ 195545 | GIFAS hospital equipment cord set, black, 4.7m 3×1.5mm ² + 4mm ² , POAG, plug T23, for direct connection |
| ✓ 860476 | GIFAS hospital equipment cord set, PUR 3×1.5mm ² , black, L = 4.5m with PE 4mm ² plug type Schuko, angled, equipment plug type 113 |

Potential distributor box



Potential distributor box

| Item no. | Designation |
|----------|---|
| ✓ 072443 | Potential distributor box 4×MC-POAG, 0.5m connector w/POAG |

Other versions on request.

✓ from stock, offer subject to prior sale

2/2